

# SENSEWELL INSTRUMENTS PVT.LTD.

Mfg. of Process Control Instruments & Automation

---

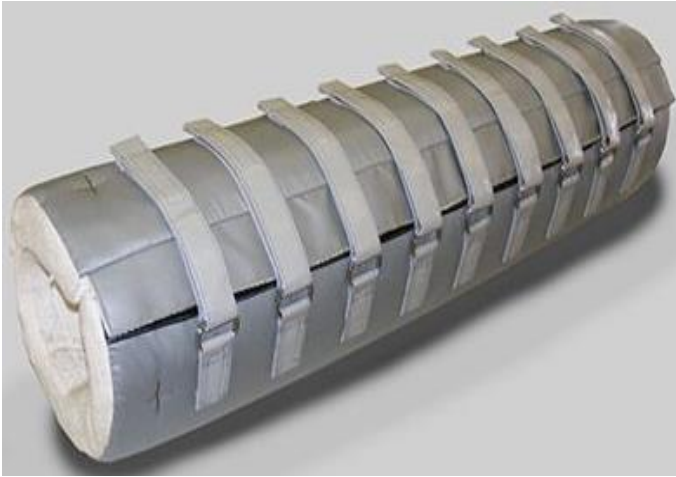
## **FLEXIBLE HEATING PAD, JACKET HEATING PAD & CUSTOM BUILT INSULATION PAD**

### **INTRODUCTIONS OF HEATER JACKETS:**

Heater jackets combined by the heating element, base core, fabrics, power cord, junction box, and control switch (or thermostat). It could be classified into two types, constant temperature type and adjustable temperature type.

The constant temperature type is implanting one or more fixed temperature control element in the electric blanket, When the temperature is lower than the set temperature, the heating blanket automatically starts heating, when the temperature reaches the set temperature; the heating blanket automatically disconnected the power supply, and continues thermal insulation. The whole process is circulated. The temperature adjustable type is built in a temperature probe, which transmit temperature signal to the relay in the temperature control box, and the relay control the connection of the circuit. Temperature could be set up by users according to the using environment and conditions. The ordinary temperature range is  $-35^{\circ}\text{C}$  to  $120^{\circ}\text{C}$ , and for other temperature range, we could customized according to customers' requirements.

**Reference Sizes for 205/210/1000L:**



**SPECIFICATIONS OF ELECTRIC HEATING BLANKET:**

**1 Voltage: 90v-250v (Also custom design)**

**2 Rated power: 100-1500W/ meter<sup>2</sup> (according to the user's different needs can be customized)**

**3 Rated current: 0.45A~15A**

**4 Temperature: Adjustable temperature type≤150 °C; Accessories: electronic temperature control box**

**Constant temperature type: 35°C~260°C±5°C(5°C/grade)**

**5 Heating area: Std. Customized, ex.: 2200mm x 300mm.**

**6 Product size: Std. Customized, ex.:2500mm x 400mm.**

### **THE FEATURE OF HEATER JACKETS:**

Thickened the thermal insulation layer make the heating blanket has better thermal insulation, and faster heating up. Smoothly lied resistant wire makes the heating blanket heating Uniform. High temperature resistance flame retardant fabrics are used. The heating blanket is designed with connection and fixation device, by which the heating area could extend easily. Different with insulation surface, the temperature tolerance of heating surface is more than 260°C. The heating blanket is built in temperature control and Several temperature probes are layout uniformly, making sure the uniform heating.

Product material:

Carbon fiber

Glass fiber

Aluminum foil

Waterproof and flame retardant

### **ADVANTAGES:**

- Integrated type
- Custom size and shape
- Full coverage heating and insulation, high thermal and heating efficiency
- Good flexibility
- Uniform heating
- Built-in overheat safety thermostat control.
- Large range, high power, fast heating.
- High insulation performance of all material
- Easy to install and remove, safer and adjustable
- Long life extruded heating cable (10 to 40 watt/meter) easy to replace heating cable & reliable with high voltage test.

---

### **UNIT - I & REG. OFFICE :**

54/4 , G.I.D.C. ESTATE, MAKARAPURA, BARODA –390010, GUJARAT, INDIA.

TEL : 91-265-2658711,22. TELEFAX : 0265 – 2633835

G.S.T. TIN NO. : 24AAHCS3969A1ZF

### **UNIT II**

PLOT NO.573, 574 ,591, 592 GIDC, PO. ALINDRA, MANJUSAR – 391775, SAVLI, DIST. BARODA.INDIA.

TEL. : 02667 –292952

Mail : [sales@sensewellindia.com](mailto:sales@sensewellindia.com)

Web. : [www.sensewellindia.com](http://www.sensewellindia.com)

---